

# Michigan 4-H Youth Dairy Days

**July 20-24, 2015**

The Pavilion for Agriculture and Livestock Education  
Michigan State University

*[http://www.ans.msu.edu/extension/youth\\_events](http://www.ans.msu.edu/extension/youth_events)  
<http://www.midairyyouth.ans.msu.edu/>*



**Held in conjunction with the Michigan Dairy Expo**

*MSU is an affirmative action/equal opportunity employer. Michigan State University Extension programs and materials are open to all without regard to race, color, national origin, gender, gender identity, religion, age, height, weight, disability, political beliefs, sexual orientation, marital status, family status, or veteran status.*

**Michigan 4-H Youth Dairy Days** will again be held in conjunction with the Annual Michigan Dairy Expo at the Pavilion for Agriculture and Livestock Education at MSU. The mission of the Michigan Dairy Expo is to encourage and promote youth involvement in dairy activities, to showcase the Michigan dairy industry and to provide continuing education to the dairy industry in Michigan and nearby states. Dairy Days events are designed for young people who are interested in dairy cattle and the dairy industry. Keep the following in mind as you decide which events you want to enter and as you complete your entry form. Get ready for an exciting fun-filled time at Dairy Days.

- Dairy Days events are open to all Michigan youth who are between 9 and 19 years old by January 1, 2015.
- Many of the events are divided into divisions that are based on age. The events consist of novice (9 to 11, limited experience), junior (9 to 14) and senior divisions (15 to 19).

### **How to Register**

Information and registration instructions for all Dairy Day Youth activities can be found in this packet, including the State 4-H Dairy Quiz Bowl Contest, State 4-H Dairy Management Contest, and State Youth Dairy Judging Contest. Please complete the individual entry form and photo release document attached.

If you are competing as part of a team for Judging, Dairy Quiz Bowl, and/or Management Contest, please indicate this on your Individual Entry Form and make sure that your county coach or staff completes the County Team Entry Form. **Appropriate Fees** (camping) **must be paid to MSU County Extension Office at the time of registration.** (Deposit to DN022677 subaccount 1058) County staff should send all (postmarked) by June 22, 2015. **Entry fees for the Dairy Days Youth Cattle Show should be paid to the MI PDCA, not to the county offices.**

Please use the **Michigan Dairy Expo Livestock Premium Book** to enter cattle into the Michigan 4-H Dairy Days Youth Show. All livestock exhibitors at Michigan Dairy Expo will need to utilize this premium book. The premium book can be found at [http://www.ans.msu.edu/ans/dairy\\_youth\\_programs](http://www.ans.msu.edu/ans/dairy_youth_programs). **Entry fees for the Dairy Days Youth Show and all other shows should be paid to the MI PDCA, not to the county offices.**

### **Deadline for Entries**

**You should submit the enclosed registration form(s) to your county MSU Extension office by June 15, 2015.** Counties must forward entries to the Dairy Extension Youth Educator by June 22, 2015. **Send to: Dairy Days, 474 S. Shaw Lane Room 1287, East Lansing, MI 48824.** County staff should send all entries as well as, and deposit to DN022677 subaccount 1058 by June 22, 2015. Cattle Entry fees should be made directly to MI PDCA.

### **DAIRY DAYS AWARD PROGRAM AND CELEBRATION PICNIC**

The Dairy Days Award Program will take place on Thursday evening July 23, at 5:30 p.m. at the MSU Pavilion Auditorium and should conclude at approximately 8:00 p.m. All are welcome to attend the program.

### **LODGING**

Camping is available at the Pavilion. Each campsite includes electricity hook up, but no direct water hook up is available. There are two water sources and a dumpsite located nearby. Camping fees are \$20 per lot per day. The following is a list of hotels in the area. The hotels are listed for convenience only and no endorsement is suggested.

- |  |   |
|--|---|
| - Comfort Inn, Okemos 1-517-347-6690         | - Kellogg Center at MSU 1-800-875-5090      |
| - Fairfield Inn, Okemos 1-517-347-1000       | - Candlewood Suites 1-517-351-8181          |
| - Holiday Inn Express, Okemos 1-517-349-8700 | - Howard Johnson, E. Lansing 1-517-351-5500 |

# 2015 MICHIGAN DAIRY EXPO

## Monday, July 20

1:00 p.m. – 5:00 p.m.

Cattle move-in begins. Dairy Days exhibitors must have cattle in place by Monday at 5:00 p.m. Open show exhibitors are encouraged to arrive Monday and must be in place by Wednesday at 7:00am NO early arrival allowed. NO MOVE-IN will be allowed Tuesday afternoon.

1:00 p.m. – 4:00 p.m.

MMPA interviews – Classroom 101A

3:00 p.m.

4-H Dairy Management Contest Coaches Meeting

4:00 p.m.

4-H Dairy Management Contest

6:00 p.m.

Cattle exhibiting in Michigan Dairy Days Youth Show must be checked in to the show office before 6:00 p.m.

## Tuesday, July 21

7:30 a.m.

Michigan Dairy Days Youth Show (beginning with Showmanship)

2:00 p.m. - 9:00 p.m.

Please do not move-in any cattle, drive-through or unload/load out any trailers during this time.

4:30 p.m.

Michigan Dairy and Livestock Expo Sale-Abortion Reception (RSVP Event)

5:00 p.m.

Dairy Youth Pizza Social - All Dairy Days participants are invited!!! (Show Arena – Bleacher Area)

6:00 p.m.

Michigan Dairy and Livestock Expo Sale-Abortion Auction (MSU Pavilion Sale Auditorium)

8:30 p.m. – 9:00 p.m.

State Dairy Judging Coaches Meeting - Classroom B

## Wednesday, July 22

7:00 a.m.

Open Show Cattle must be in place

7:45 a.m. – 3:00 p.m.

State Youth Dairy Judging Contest

9:30 a.m. – 3:00 p.m.

The Great Dairy Adventure- Consumer Education Day

11:00 a.m. – 4:00 p.m.

Open Show Cattle- Breed Association Entry Check-In (Classroom D)

5:00 p.m.

Jr Holstein and Jr Jersey Meeting

6:00 p.m.

The Party Barn will include games and fun for youth!! (Junior Show Shirts will be distributed.)

8:30 p.m.

Ice Cream Social

8:30 p.m.

All-Michigan show – Exhibitors Meeting (Classroom D)

## Thursday, July 23

8:00 a.m.

Dairy Youth Quiz Bowl Coaches Meeting

9:30 a.m.

Dairy Youth Quiz Bowl Contest

11:00 a.m. – 4:00 p.m.

Open Show Cattle - Breed Association Entry Check-in at SHOW OFFICE

Cattle exhibiting in the Open Breed Shows must check their registration papers in by 4:00 p.m.

4:00 p.m.

Close of ALL Open Show Entries

5:30 p.m.

Michigan Dairy Expo Celebration Picnic followed by Dairy Youth and 4-H Recognition Program

8:00 p.m.

Michigan Jersey Futurity Ring 1

8:15 p.m.

29<sup>th</sup> Annual Michigan Holstein Futurity Ring 2

9:00 p.m.

Ice Cream Social Celebrating Michigan's Dairy Industry

## Friday, July 24

7:30 a.m.

MICHIGAN DAIRY EXPO SHOWMANSHIP

Ring 1 Holstein Ring 2 Jersey

8:30 a.m.

MICHIGAN DAIRY EXPO HEIFER CLASSES - ALL BREEDS

\*\* All heifers, dry cows and bulls will show in the morning.

Ring 1 - Holstein Ring 2 - Jersey

Ayrshire, Brown Swiss, Guernsey, Milking Shorthorn, Red & White, Other (starting with the breed with largest entry numbers will follow Holstein and/or Jersey in the first available ring\*\*\*

~12:00 p.m.

MICHIGAN DAIRY EXPO SUPREME JUNIOR CHAMPION (conclusion of the heifer breed shows)

\*Supreme Jr. Champion of the Junior Show will be followed by Supreme Jr Champion of the Open Show.

~12:30 p.m.

All-Breeds Pee-Wee Showmanship

1:30 p.m.

MICHIGAN DAIRY EXPO MILKING COW CLASSES - ALL BREEDS

Ring 1 Holstein Ring 2 Jersey

Ayrshire, Brown Swiss, Guernsey, Milking Shorthorn, Red & White, Other (starting with the breed with largest entry numbers will follow Holstein and/or Jersey in the first available ring.\*\*\*

~4:30 p.m.

MICHIGAN DAIRY EXPO SUPREME CHAMPION

\*Supreme Grand Champion of the Junior Show will be followed by Supreme Grand Champion of the Open Show.

\*\*Open show start times are subject to change depending on the number of entries.

\*\*\* Time and order of color breed shows may be adjusted depending on final entry numbers.

## Premiums and Ribbons

Ribbons will be awarded to 4-H Youth Dairy Day participants in specific competitions based upon individual and team rankings. Award schedules for 4-H Youth Dairy Days Events can be found at the end of this packet. Award checks will be mailed after the completion of the Michigan Dairy Expo. Michigan 4-H Youth Dairy Days and Michigan Dairy Expo officials reserve the right to adjust the award scale contingent on the number of cattle exhibited, sponsors, and show expenses. Exhibitors must report any discrepancies in the awards to the State 4-H Dairy Office within 30 days of receipt for a correction to be properly made. Report discrepancies to Carla McLachlan at 517-432-5402.

## HIGH RANK SCHOLARSHIP AWARDS

Cash awards will be given to the **top two eligible junior and senior individuals** based on highest rankings in 3 of 4 events. Events include:

- Showmanship (Ranking)
- Dairy Judging Contest (Ranking)
- Dairy Quiz Bowl (Ranked by number of correctly answered questions in first 2 rounds)
- Dairy Management Contest (Ranked by number of correctly answered questions)

Ties will be broken by the highest ranking in the 4<sup>th</sup> contest, if both participants have completed 4 contests. If both participants did not compete in all 4 contests, the placings will be determined by the highest ranking of youth in an individual contest to be chosen at random. Winners will be announced at the Dairy Days Awards Program.

Any youth who has completed one or more semesters of secondary education with Animal or Dairy Science courses (university, college, community or junior college, ag tech program, etc.) is not eligible to be awarded the senior scholarship.

The highest ranking junior and senior individuals will be awarded \$1000.00 each. The second highest ranking junior and senior individuals will receive \$750.00. Individuals can only win the overall high rank award once as a junior and once as a senior. Beginning in 2012, the second highest rank award winner in the junior and senior division is eligible to win the overall high rank award in that specific division in the future and will be awarded \$250.00 if they are the high rank winner. All high rank awards are capped at \$1000.00 per individual in each age division. Previous year winners of give-away heifers and first and second place high rank awards are not eligible for this award.

## Volunteers

Volunteers are needed to make the events run smoothly. **County staff should submit the names of interested volunteers on the volunteer helper nomination form sent to counties.** Each quiz bowl and dairy judging team **must** plan to have one volunteer available on the day of their contest. Selected volunteers will be notified of their responsibilities one-week before the event.

## Regulations Common to All Events

Before attending Dairy Days and the Michigan Dairy Expo, participants, leaders and staff should become familiar with the following regulations.

1. Michigan State University reserves the right to reject entirely, or accept conditionally any entry, or application for entry, or to withdraw classification and prizes in any department upon the closing of entries whenever it, in its sole judgment determines that such action is in the best interests of, the Michigan Dairy Expo.
2. **Authority**—The Dairy Youth Extension Educator has authority to make all decisions within divisions in accordance with these rules and regulations. All protests and complaints should be written, signed and lodged with the Extension Educator. If any person feels aggrieved by a decision of the Extension Educator,

- that person may appeal that decision to the 4-H dairy programming committee.
3. **Liability**—It is understood that all event participants, their principals and their agents or employees agree to make no claim against Michigan Dairy Expo, any official of the event or anyone acting by, for or through them, for loss, damage or injury to any property, animal or person resulting from any cause. All animals, exhibits, grounds and buildings will be under the entire control and management of Michigan State University, but neither Michigan State University nor any of its officials will in any case be held responsible for any loss or damage that may occur to any youth participating.
  4. **Fraud**—The management reserves the right to withhold awards in any case in which it appears that the regulations have not been complied with, or that fraud or deception has been practiced or attempted.
  5. Three age divisions will be offered for each contest (age determined as of 1/1/2015).
    - Novice: 9 to 11 years (participants are not eligible for overall award). A youth may only participate as a novice for two years.
    - Junior: 9 to 14 years
    - Senior: 15 to 19 years.
  6. **A Novice division for the contests has been developed.** This division is designed for youth who are 9, 10, and 11 years old and just beginning to compete. Stations/contests will be much simpler than in the junior and senior divisions. The goal of this division is to encourage continued involvement. A youth may participate in the novice division twice at Dairy Days (if age appropriate) before moving to the junior division. Youth can elect to participate in the junior division rather than the novice division, but cannot participate in both the novice and junior divisions in the same year at 4-H Youth Dairy Days. Individual results from the novice division cannot be used for the determination of Overall High Rank Awards. All other management contest rules apply. The contest format for the novice division will follow that of the junior division.
  7. ***Multi-County teams need to practice together and register together on the County Team Entry Form. Incomplete teams will be combined by lottery at the coaches' meeting prior to the specific contest.***
  8. Any youth who has been enrolled in secondary education for one more semesters and/or has completed one or more collegiate level classes in Animal or Dairy Science is not eligible to receive the high rank scholarship or place in the judging, management, or quiz bowl contents.

### **Conduct Policy**

1. Anyone participating in this MSU sponsored activity who is caught in the act of theft or vandalism, or caught with illegal drugs or alcohol, or who is involved in other such offenses, will immediately be sent home at his or her own expense. If it is determined by the staff, leaders or persons in charge of the activity that the offense warrants it, the offender will be turned over to the proper authorities.
2. Security of possessions is each youth's responsibility. MSU is not responsible for lost items.

### **Resources**

The following are general resources that can be used to prepare for Dairy Days events:

#### **Babcock Institute**

<http://babcock.cals.wisc.edu>

**Dairy Cattle Judging Techniques** by George W. Trimberger

Available at [www.amazon.com](http://www.amazon.com) & Nasco

**Hoard's Dairyman Magazine**—reference guides available through Hoard's publications

<http://www.hoards.com>

**Holstein Foundation** <http://www.holsteinfoundation.org>

**University of Wisconsin Extension** (quiz bowl and judging materials)

<http://www.uwex.edu/ces/dairyouth/>

**Virginia Tech** <http://www.vtdairy.dasc.vt.edu/>

Watch the **Animal Science Youth Extension** page – Dairy – for additional resources.

<http://www.midairyouth.ans.msu.edu/>

[http://www.ans.msu.edu/youth\\_extension\\_programs/youth\\_events](http://www.ans.msu.edu/youth_extension_programs/youth_events)

# Michigan 4-H Dairy Days Youth Show

All information and entry instructions for the Michigan Dairy Days Youth Show can be found in the Michigan Dairy Expo Cattle Premium Book. This premium book can be found at <http://www.midairyyouth.ans.msu.edu/> or can be mailed to you at your request. Each state breed organization also has copies of the Michigan Dairy Expo Cattle Premium Book. **All cattle entry fees should be paid to Michigan PDCA. If you are planning to compete in Showmanship only, i.e. will not be showing the animal in its breed class, you may sign up for showmanship on the entry form included with this packet. If you are only competing in showmanship, you must check in at the Pavilion and complete sign up prior to entries closing on Monday, July 21.**

## Michigan 4-H Youth Dairy Cattle Judging Contest

The Michigan Youth Dairy Cattle Judging Contest will consist of individuals or teams of three or four members competing in novice, junior or senior divisions. All youth, regardless of past participation in national contests are encouraged to participate.

Please take a few moments to familiarize yourself with the score card prior to the contests.

K	B	O	D	E	F	S	H	L	J	K	L	M	N	O	P	R	T	U	V	W	X
---	---	---	---	---	---	---	---	---	---	---	---	---	---	---	---	---	---	---	---	---	---

CONTESTANT'S NAME OR NUMBER \_\_\_\_\_

**ANIMAL SCIENCE JUDGING CARD**

CLASS \_\_\_\_\_

REASON SCORE \_\_\_\_\_

MSU is an affirmative action, equal opportunity employer

Eight classes of cows and heifers will be judged. Classes will be selected from the following breeds, if available: Ayrshire, Brown Swiss, Guernsey, Holstein, Jersey, and Red and White. Fifteen minutes will be allowed to place each class of four animals, including making notes for oral reasons.

**A novice division for the judging contest has been developed.** This division is designed for youth who are 9, 10, and 11 years old and just beginning to compete in the judging contest. Contestants will judge 4 classes and will not have to do oral reasons. A simple multiple choice and/or fill in the blank test about judging and cow parts will be given. The goal of this division is to encourage continued involvement in judging.

A youth may participate in the novice division of the judging contest twice at Dairy Days (if age appropriate) before moving to the junior division. Youth can elect to participate in the junior division rather than the novice division, but cannot participate in both the novice and junior divisions in the same year at Dairy Days.

Individual results from the novice division cannot be used for the determination of Overall High Rank Awards. All other judging contest rules apply.

In the junior division, scoring will be based on placing scores, reasons score for one set of oral reasons and identification of 25 cow parts. The cow parts portion of the contest will have a list of terms on the sheet and contestants must match the correct term with the correct labeled part. **All juniors are required to give one set of reasons. In the senior division, scoring will be based on placing scores and three sets of oral reasons.**

Ribbons will be awarded for the top 25 junior and senior individuals in this event. The top 25 seniors plus all contestants in this event who have competed previously at the national contest are eligible to participate in judging clinics and tryouts to determine the state teams. From these clinics, individuals will be chosen to compete in the fall contests. The final team assignment will be made following the final judging practice and is the responsibility of the Dairy Youth Educator.

**Counties must submit the County Team Entry Form with the entries.** Coaches are encouraged to call and confirm their team's registration if there is some question. County leaders are also advised to bring their copy of the entry forms. Each county must also provide a volunteer to assist with the contest.

A coach's meeting will be held the evening before the contest (see schedule of events). All changes in team member make-up must be made at this meeting. **If a representative from your team is not able to attend this coaches meeting, all changes should be FAXed to 517-353-7855 by 5 p.m. the day before the contest.** Final registration and packets will be available for pickup on the morning of the contest.

## **Judging Contest Eligibility and Rules Summary**

1. Eligibility for all State 4-H dairy contests is to be determined at the county level. If discrepancies appear on a state level, these will be the responsibility of the county involved.
2. A county may enter less than four contestants. The team score will be based on the total scores of the top three individuals on the county team.
3. Each county may enter one or more junior teams and one or more senior teams. Counties that are unable to get enough members for a team may pair up with other counties to form a multi-county team. **A county may have multiple teams or individual entries.**
4. While the contest is in progress, communication between contestants or contestants and coaches is **not** allowed (neither written nor verbal.) If reasons room monitors see or hear contestants communicating, contestants will be given one warning. At the second occurrence 25 points will be deducted from the score for that class. At the third offence a score of zero will be given for that class.
5. Neither coaches nor parents are allowed in the ring during the judging portion of the contest or in the reasons holding rooms.
6. Each team needs to provide a volunteer to assist with the contest, which can be the coach.
7. Any youth who has completed an Animal or Dairy Evaluation course at the collegiate level is ineligible to compete as a team member or individual.
8. Youth age 19 as of 1/1/2015 are eligible for this contest; however, they may not be eligible to compete in National 4-H contests. Membership in a local 4-H program is also required for eligibility at the National 4-H contest.

## **Scoring Guidelines-- Novice Division Judging**

Scoring will be on the following basis:

1. Placing scores for 4 classes --50 points possible/class.
2. A multiple choice and/or fill in the blank test--50 points possible.

## Scoring Guidelines-- Junior Division Judging

Scoring will be on the following basis:

1. Placing scores--50 points possible/class.
2. One set of oral reasons --50 points possible/class.
3. Identification of 25 key cow parts (50 points for correct identification). Key for cow parts is included with this packet. Only those parts listed on the key sheet will be considered correct for this contest.

## Scoring Guidelines-- Senior Division Judging

Scoring will be on the following basis:

1. Placing scores--50 points possible/class.
2. Three sets of oral reasons--50 points possible/class.

# 4-H Youth Dairy Quiz Bowl Contest

The Youth Dairy Quiz Bowl competition tests the dairy knowledge of teams of youth. Teams are awarded points when questions are answered correctly. While the majority of questions will focus on dairy cattle health, a wide range of questions can be asked. A list of general resources and questions has been provided. You can find more information at <http://www.midairyyouth.ans.msu.edu/>

Ribbons and awards will be presented to the members of the top 10 teams in each division. The first-place team in the senior division of the Quiz Bowl who has not previously competed in national competition will be invited to attend the North American Invitational Quiz Bowl Contest in Louisville, Kentucky, in November 2015. The invited team must let the Dairy Youth Extension Educator know by August 14 and if they plan to participate, must provide a \$400.00 deposit. The deposit and \$500.00 award is available to support team travel to the contest in Kentucky. Team members planning to attend this national contest must be 4-H members. **If the team does not travel to the contest the deposit will not be returned. If no deposit is made by August 14, the next highest placing team will be given the opportunity to participate under the same guidelines.** Entry fees will be paid by the MI Dairy Youth Program as well as a \$300.00 travel stipend.

Each county may enter one or more novice teams, one or more junior teams, and one or more senior teams. Junior contestants are ages 9 to 14 and seniors are ages 15 to 19. **Note: Contestants must reach these ages by January 1 of the current year.** Counties must submit the County Team Entry Form to the Youth Dairy Educator with entries. Coaches are encouraged to confirm their team registration.

A mandatory coach's meeting will be held immediately prior to the contest. All coaches must attend. Teams will be seeded at this time. Check the schedule in the schedule of events for the time of the mandatory coach's meeting.

Each room will have designated seats for coaches or designee to sit. Please see section 4b under procedures for more details.

## Requirements – Quiz Bowl

1. Any youth who has completed an Animal or Dairy science course at the collegiate level, an Animal or Dairy Science short course, online course Animal or Dairy Science, or AP Animal or Dairy Science course eligible for credits towards a college degree is ineligible to compete as team member. No individual entries are allowed, i.e. if a youth is the only eligible youth from a county to compete or a county has an incomplete team, a composite team will be created during the coach's meeting prior to the contest so every participant is on a team.
2. Each county may enter one or more junior teams and one or more senior team in each division. A team



may have four or three members and a coach. No more than two alternates may be entered as substitutes. Counties unable to get enough members for a team may pair up with other counties to form a multi-county team. Pre-entered teams will be allowed to compete (made up of youth from 1 or more counties). Late registrations will be assigned to teams by the committee/staff. Final approval of multi-county teams will be made by the Dairy Youth Educator.

3. All teams should name a team captain.
4. Members who have participated in the North American Invitational Dairy Quiz Bowl contest in Louisville, Kentucky, **may** participate in the State Dairy Bowl contest; however they will **not** be eligible for competition in the North American Dairy Quiz Bowl Contest.
5. Individuals not enrolled in 4-H may participate, but are not eligible for national competition.
6. Each team must provide a volunteer.

## Procedures – Quiz Bowl

1. Teams will compete in a series of one-on-one quiz off double elimination contests until the top team is chosen. Some teams may be awarded a bye during the elimination as part of the assignment process.
2. Competition between teams will be in two parts:
  - Part A** - Eight true/false questions covering a specific topic relating to the dairy industry will be asked of each senior team. Four questions will be asked of each novice and junior team. Each team member, in rotation, will be asked a question. Correct answers are worth two points with no deduction for incorrect answers. No teammate assistance may be offered or received. Questions may be reread only once. Answers must be started within 15 seconds of when the reading is completed. Points will be deducted if the team member does not offer some response. Silence will lead to a deduction, but incorrect answers will not.
  - Part B** - A total of 14 toss-up questions will be asked. Contestants must buzz in for the right to answer the question.
    - a. The first team to signal must answer the question within 5 seconds after being acknowledged by the moderator.
    - b. Correct answers are worth 5 points. Points will be deducted if the team member does not offer some response. Silence will lead to a deduction, but incorrect answers do not. No points are deducted for incorrect answers.
    - c. Any team answering a question without being acknowledged will lose 10 points and the question will be dropped.
    - d. Team members may not discuss toss-up questions.
    - e. If an answer is incorrect, the other team has the opportunity to answer the question immediately without having it reread.
    - f. If neither team can offer an answer to the question within 10 seconds, the moderator will give the answer and the question will be dropped. Neither team will forfeit points.
    - g. When a signal is pushed before the question is completely read, the moderator will stop reading the question when the light goes on, and the person signaling may answer the question after being acknowledged. If correct, the team will receive credit. If the answer is incorrect or incomplete, the judge may not ask the contestant to explain the answer. The question will then be completely reread and the other team will have the opportunity to answer it.
    - h. A bonus question will be asked after three different team members have correctly answered a toss-up question. The answers to the bonus question must come from the team captain.
    - i. Bonus questions are not passed to the other team if an incomplete or incorrect answer is given.
    - j. All bonus questions will be worth five points for each correct response. If three responses are required, maximum value is 15 points.
3. The majority of questions will relate to dairy cattle health. Remaining question topics can come from any area within the dairy industry.
4. Answers and interpretations of questions will be the sole responsibility and final recall of the judges.
  - a. A team member will have the privilege of asking the judges' panel to verify an answer that he/she feels is correct.
  - b. Coaches will be given 1 flag to signal the moderator and judge they wish to verify an answer. The flag may only be used once per round and no further comments, challenges, or verifications from the coach will

be allowed. If the challenge or verification of the coach fails, i.e. the rulings of the moderator and/or judge is upheld, the coach's team loses the point value of that question, up to a maximum of 15 points.

c. Coach's comments on Quiz Bowl questions may be submitted in writing to the contest coordinator upon completion of all Quiz Bowl contests.

5. Spectators in the room may not challenge or comment on a question or the decisions of the moderator or judge during the contest. If a challenge or comment is made, the spectator's team will have the point value of that question deducted; up to 15 points may be deducted.
6. Any coach or spectator who is disruptive or disrespectful to the moderators and judges will be given one warning. After receiving one warning in any room, the spectator or coach will not be allowed to reenter any contest room for the remainder of the event. Moderators and judges volunteer their time and expertise to make this an educational, valuable, and enjoyable event for Michigan youth, thus need to be treated respectfully.
7. Any question or area not covered by these rules will be decided by the Dairy Educator. All decisions are final.
8. **Once a team has been called to a room to compete, the team has 5 minutes to be seated and ready for competition. Any team not ready to compete will forfeit the round.**
9. Final team placing will be determined by a double elimination process. Each team will have an opportunity to compete in two rounds. The first round will be against another team that has not previously played. The second round will be against either a winning or a losing team, depending on the result of the first contest. A second loss eliminates a team from competition. In case of a team receiving a bye in the first round, the team will play a winning team from the first round and advance either to the next winners or losers round.
10. Youth age 19 as of 1/1/2015 are eligible for this contest; however, they may not be eligible to compete in National 4-H contests.

## The 4-H Dairy Management Contest

The Dairy Management Contest tests the general dairy knowledge of contestants through displaying and utilizing skills that the participant has learned. Individuals will rotate through a series of stations on a variety of dairy management topics. At each station participants may perform tasks, write an answer on a card, or present an oral answer to a judge. Arrangements will be made to accommodate contestants needing assistance with reading and/or writing. These requests must be made prior to the contest. The winning Senior team will be invited to participate in the Dairy Management Contest in Harrisburg, PA in September. The invited team must let the Dairy Youth Extension Educator know by August 14 and provide a \$400.00 deposit if they plan to participate. The deposit and \$500.00 award is available to support team travel to the contest in Pennsylvania. **If the team does not travel to the contest the deposit will not be returned. If no deposit is made by August 14, the next highest placing team will be given the opportunity to participate under the same guidelines.**

### GENERAL RULES – MANAGEMENT CONTEST

1. The contest will consist of a novice, junior and senior division.
2. Individuals and teams can compete. A team consists of 3 or 4 members. Counties unable to field a complete team can combine with other counties to form teams. Pre-entered teams will be allowed to compete (made up of youth from 1 or more counties). Late registrations will be assigned to teams by the committee/staff during the coaches meeting prior to the contest. Final approval of multi-county teams will be made by the Dairy Youth Extension Educator.
3. Team scores will be calculated by dropping the lowest of the 4 team member scores. Teams of 3 will not have a drop score. A total score will then be calculated for each team using the 3 highest scores. The team with the highest total will win the contest.
4. Top 5 teams and individuals will be recognized in both the junior and senior division.
5. Ties will be broken by utilizing team or individual scores on Station 6. The highest score on Station 6 will be the winner. If the contest is still a tie after evaluating Station 6 scores, then the scores from station 5 will be used. Judges will continue through the stations in this manner until the tie is broken.

6. No talking between contestants is allowed in the contest area. Any contestant talking will receive a warning. A second warning will result in the deduction of 10 points. A third warning will result in disqualification from the contest.
7. Any youth who has completed an Animal or Dairy Science course at the collegiate level, an Animal or Dairy Science short course, online course Animal or Dairy Science, or AP Animal or Dairy Science course eligible for credits towards a college degree is ineligible to compete as team member. This individual may compete as an individual but will not be ranked among the top 5 individual high scores at the contest and will not be eligible to compete in national contests.
8. Youth age 19 as of 1/1/2015 are eligible for this contest, however, they may not be eligible to compete in National 4-H contests. Youth members of the winning team must be 4-H members to compete at the National contests.

A mandatory coach's meeting will be held prior to the contest at a time that will be announced in the Dairy Days schedule. Teams and individuals must pre-register for the contest with the Dairy Youth Office. Team start times will be assigned at this meeting. A whole team should start the contest at one time. All questions, concerns, and complaints during and after the contest are to be brought to the attention of the Dairy Youth Extension Educator.

### **The Senior Division – Management Contest**

The senior contest will consist of 6 stations. At these stations participants will be expected to demonstrate a wide depth and breadth of knowledge. All stations will be worth 20 points. The first station will require an individual to assess a problem and prepare oral answers to questions, and answer questions from the judge. The judge will then score the presentation and answers to questions. The remaining portion of the contest will include one station that will require the participant to demonstrate some skill to an evaluator and four stations that will require the youth to evaluate a situation and then write an answer on an answer sheet. Topics for the 6 stations in the senior contest will be selected from the following list. A list of resources for this contest is available from the Michigan Dairy Youth Office or <http://www.midairyyouth.ans.msu.edu/>

- |  |                                     |
|--|-------------------------------------|
| 1. Reading and analyzing DHIA records              | 12. Reproductive anatomy            |
| 2. Identifying feeds & testing their quality       | 13. Evaluating cattle confirmation  |
| 3. Body condition scoring                          | 14. Hoof care                       |
| 4. Identifying & proper interventions for mastitis | 15. General cow anatomy             |
| 5. Proper milking procedure                        | 16. Evaluating cow welfare          |
| 6. Caring for a newborn calf                       | 17. Digestive anatomy               |
| 7. Proper procedure for AI                         | 18. Evaluating cow behavior         |
| 8. Sire selection using cattle evaluation skills   | 19. Cow natural history & evolution |
| 9. Properly administering medications to cattle    | 20. Gait scoring                    |
| 10. Culling decisions                              | 21. Cow comfort                     |
| 11. Dairy product evaluation                       |                                     |

### **The Junior Division– Management Contest**

The junior contest will consist of 10 stations. All stations will be worth 10 points. The first station will require participants to demonstrate some skill to an evaluator. The final nine stations will require the youth to write an answer on an answer sheet. The 10 stations will be selected from the following list. Once a team enters the contest area, they will have 30 minutes to complete all 10 stations. A list of resources for this contest is available from the Michigan Dairy Youth Office or <http://www.midairyyouth.ans.msu.edu/>

1. Identifying the parts of the cow.
2. Identifying breeds of dairy cattle.
3. Identifying feed ingredients
4. Detecting heat in cattle and identifying AI equipment
5. Administering medication to cattle
6. Care of a newborn calf
7. Reading pedigree records
8. Reading DHIA records
9. The 4-H pledge
10. Placing a halter on a cow/tying a slip knot
11. Causes and detection of mastitis
12. Body condition scoring
13. Culling decisions
14. Dairy products identification
15. Evaluating cattle confirmation
16. Evaluating welfare
17. Cow comfort
18. Cow behavior
19. Parlor symptoms ID

## **The Novice Division – Management Contest**

**A Novice division for the management contest has been developed.** This division is designed for youth who are 9, 10, and 11 years old and just beginning to compete. Stations will be much simpler than in the junior and senior divisions of management contest and will not focus on any specific area of dairy production. The goal of this division is to encourage continued involvement. There will be 6 to 8 simple stations in the novice division, with no demonstration.

A youth may participate in the novice division twice at Dairy Days (if age appropriate) before moving to the junior division. Youth can elect to participate in the junior division rather than the novice division, but cannot participate in both the novice and junior divisions in the same year at Dairy Days. Individual results from the novice division cannot be used for the determination of Overall High Rank Awards. All other management contest rules apply. The contest format for the novice division will follow that of the junior division.

Each county may enter one or more novice teams, one or more junior teams, and one or more senior teams.

# Educational Contest Awards

## 2015 MI 4H Dairy Days Awards

July 20-24, 2015

### Educational Youth Events

Class Name	1	2	3	4	5
<b>Dairy Judging Contest</b>					
Top 5 Junior Individuals (9-15 yrs old)	\$ 40.00	\$ 20.00	\$ 15.00	\$ 10.00	\$ 5.00
Top 5 Senior Individuals (16-19 yrs old)	\$ 40.00	\$ 20.00	\$ 15.00	\$ 10.00	\$ 5.00
Top 5 Novice Individuals (9 to 12 yrs)	\$ 40.00	\$ 20.00	\$ 15.00	\$ 10.00	\$ 5.00
Top 5 Junior Teams	\$ 45.00	\$ 35.00	\$ 25.00	\$ 20.00	\$ 20.00
Top 5 Senior Teams	\$ 45.00	\$ 35.00	\$ 25.00	\$ 20.00	\$ 20.00
Top 5 Novice Teams	\$ 45.00	\$ 35.00	\$ 25.00	\$ 20.00	\$ 20.00
<b>Dairy Management Contest</b>					
Top 5 Junior Individuals	\$ 40.00	\$ 20.00	\$ 15.00	\$ 10.00	\$ 5.00
Top 5 Senior Individuals	\$ 40.00	\$ 20.00	\$ 15.00	\$ 10.00	\$ 5.00
Top 5 Novice Individuals	\$ 40.00	\$ 20.00	\$ 15.00	\$ 10.00	\$ 5.00
Top 5 Junior Teams	\$ 45.00	\$ 35.00	\$ 25.00	\$ 20.00	\$ 20.00
Top 5 Senior Teams	\$ 45.00	\$ 35.00	\$ 25.00	\$ 20.00	\$ 20.00
Top 5 Novice Teams	\$ 45.00	\$ 35.00	\$ 25.00	\$ 20.00	\$ 20.00
Travel Awards Top Team	\$ 500.00				
<b>Dairy Quizbowl Contest</b>					
Top 5 Junior Teams	\$ 80.00	\$ 70.00	\$ 60.00	\$ 50.00	\$ 40.00
Top 5 Senior Teams	\$ 80.00	\$ 70.00	\$ 60.00	\$ 50.00	\$ 40.00
Top 5 Novice Teams	\$ 80.00	\$ 70.00	\$ 60.00	\$ 50.00	\$ 40.00
Travel Awards Top Team	\$ 500.00				
<b>High Rank Award</b>					
Junior Exhibitor	\$1,000.00	\$ 750.00			
Senior Exhibitor	\$1,000.00	\$ 750.00			

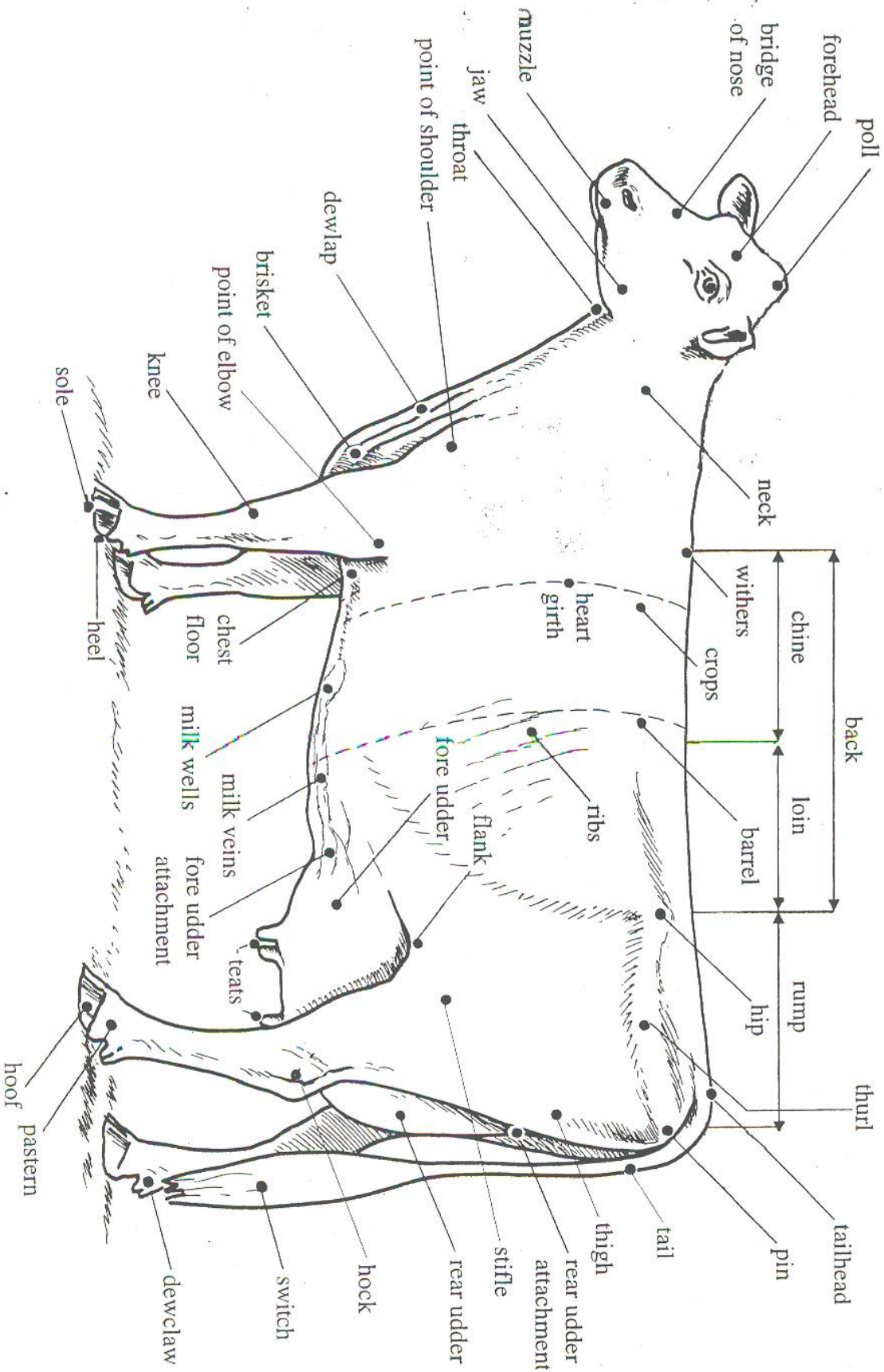
Educational Awards are subject to adjustment contingent on the number of participants, sponsors and event expenses.

## Michigan Livestock Expo

The Michigan Livestock Expo Sale-abration will be held at the MSU Pavilion during the MI Dairy Expo. Michigan agriculture commodity groups will be hosting a reception featuring Michigan products at 4:30 p.m. on Tuesday, July 21. This VIP reception is to be held immediately before the sale on Tuesday afternoon for government dignities, industry representatives and agricultural supporters. Business casual dress is suggested for the reception. The sale event is open to all.

Youth who participated in the 4-H Youth Dairy Days will be included in the Sale-abration. The Overall Champion Showperson, as well as the exhibitors of the Overall Junior Champion Female and the Overall Champion Female will be the representatives in the sale. Youth participants are encouraged to be prepared with a clean set of show whites for the Sale-abration event.

# PARTS OF A DAIRY COW



**July 20-24, 2015**  
**Individual Exhibitor Entry Form - 4-H Youth Dairy Days**

Every individual who will be participating in Dairy Days activities must complete this form

Recommended Entry Deadline -- **Due in County Office on June 15**  
Make Checks payable to your County Extension Office

**Please Print. All information must be completed!! Incomplete entries will be returned.**

First Name \_\_\_\_\_ Last Name \_\_\_\_\_

Address \_\_\_\_\_ City \_\_\_\_\_ MI, Zip \_\_\_\_\_

Phone Number \_\_\_\_\_ Birth date \_\_\_\_\_

County \_\_\_\_\_ Email: \_\_\_\_\_

**Age determined as of 1/1/15**

Will you participate in the Dairy Days events as a: \_\_\_\_ Novice (9-11) \_\_\_\_ Junior (9 - 14) \_\_\_\_ Senior (15 - 19)

Check all events you will participate in:

**Judging Contest**  **Individual** or  **Team** (Coaches -- please complete a County Team Entry Form)

**Dairy Quiz Bowl**  **Individual** or  **Team** (Coaches -- please complete a County Team Entry Form)

**Dairy Mgt Contest**  **Individual** or  **Team** (Coaches -- please complete a County Team Entry Form)

**Showmanship Only** (Do not complete here if you will be sending in cattle entry forms. This is strictly for youth who will exhibit in showmanship and no other portion of the Dairy Days Youth Show.) **It is your responsibility to locate an animal to use for Showmanship. Each animal can only be used 1 time in Dairy Days Showmanship.**

**Camping Site\*** Total number of sites \_\_\_\_ x # of nights \_\_\_\_ x \$20/ea. = \$ \_\_\_\_

**\*only one person for each camp site needs to fill this out.**

All Entries from Counties are due (postmarked) in the Extension Dairy Youth Specialist's office by June 22, 2015.

**Each exhibiter should complete the reverse side of this form - the release form.**

**EXHIBITORS SIGNATURE** \_\_\_\_\_

Signing this form indicates that the participant has read, understands and agrees to follow all rules.

Please use the **Michigan Dairy Expo Livestock Premium Book** to enter cattle into the Michigan Dairy Days Youth Show. All livestock exhibitors at Michigan Dairy Expo will need to utilize this premium book. The premium book can be found at [http://www.ans.msu.edu/extension/youth\\_events](http://www.ans.msu.edu/extension/youth_events)





# Youth Code of Conduct/ Media Medical Release Form



**Participant Name:** \_\_\_\_\_

**County of 4-H Participation:** \_\_\_\_\_ **Program Year:** 20\_\_\_\_ - 20\_\_\_\_

Instructions: This two-page form is required for participation in Michigan State University Extension 4-H youth programs. Each section requires a separate authorization.

## **SECTION 1- Required**

### Michigan 4-H Code of Conduct

Participation in Michigan 4-H programs is subject to the observance of the program rules. Any participant who knowingly violates this Code of Conduct is subject to discipline, up to and including removal from the activity he or she is participating in (at his or her own expense) or the entire county 4-H program.

Determination of disciplinary action shall be done with input from the volunteers and staff overseeing the program or activity. Final decisions about discipline will be made by the MSU Extension staff.

Michigan 4-H members will:

- Show respect for, and cooperate with, fellow members, volunteers and staff.
- Follow 4-H policies and procedures when participating in any 4-H sponsored event.
- Under no circumstances, commit or threaten violence toward any individual, group or the program.
- Under no circumstances, possess, sell or consume alcohol or possess, sell or use controlled substances at an MSU Extension 4-H youth activity or event.
- Under no circumstances, attend or participate in an MSU Extension 4-H youth activity or event under the influence of alcohol and/or controlled substances including tobacco, electronic cigarettes, etc.
- Under no circumstances, bring dangerous or unauthorized materials (such as explosives, weapons or similar items) to an MSU Extension 4-H youth activity or event.
- Abstain from harassment or bullying of another participant, volunteer or staff member (either in face to face interactions, through social media or other communication venues), particularly when the behavior is disrespectful as regards a person's gender, race, age, sexual orientation, religion, national origin, disability or appearance.
- Not cheat or falsely represent efforts related to 4-H project activities.

I have read and I understand the Michigan 4-H Youth Code of Conduct. I agree to abide by the rules stated above. I understand I may be removed as a participant from the activity or program, if I fail to follow these rules.

**Participant Signature:** \_\_\_\_\_ **Date:** \_\_\_\_\_

**Parent/Guardian Signature:** \_\_\_\_\_ **Date:** \_\_\_\_\_

Parent/Guardian must sign if participant is under 18.

## **SECTION 2- Required**

### Evaluation Acknowledgement

As a participant in the Michigan State University Extension/ 4-H program, your child may be asked to help with the evaluation of the program. Your child may be asked to complete a short survey about what he/she learned or did as a result of the program. Surveys could be given before the program begins and/or after the program has ended. Surveys typically take no more than 10 minutes to complete. All surveys are confidential. Youth are not required to participate in a survey. If you or your child does not wish to participate, it will not affect involvement in any programs of Michigan State University. If you do not want your child to participate in program evaluations or have questions about the evaluation, contact your local 4-H coordinator at the MSU Extension Office.

**Parent/Guardian Signature:** \_\_\_\_\_ **Date:** \_\_\_\_\_

Participant must sign if over 18.

**MICHIGAN STATE UNIVERSITY** | **Extension**

MSU is an affirmative-action, equal-opportunity employer. Michigan State University Extension programs and materials are open to all without regard to race, color, national origin, gender, gender identity, religion, age, height, weight, disability, political beliefs, sexual orientation, marital status, family status or veteran status.

## Youth Code of Conduct/ Media Medical Release Form

Participant Name: \_\_\_\_\_

County of 4-H Participation: \_\_\_\_\_ Program Year: 20\_\_\_\_ - 20\_\_\_\_

### **SECTION 3- Required to Complete, Authorization is Optional**

#### Media Release

I authorize Michigan State University Extension/4-H to record my image and/or voice for use by Michigan State University Extension or its assignees in research, education, and promotional programs. I understand and agree that these audio, video, film, and/or print images may be edited, duplicated, distributed, reproduced, broadcasted, and/or reformatted in any form and manner without payment of fees in perpetuity.

\_\_\_\_\_ I do authorize. \_\_\_\_\_ I do not authorize.

Parent/Guardian Signature: \_\_\_\_\_ Date: \_\_\_\_\_

Participant must sign if over 18.

### **SECTION 4- Required**

#### Medical Information

Participant's full legal name: \_\_\_\_\_

Birth date: \_\_\_\_\_ Phone: \_\_\_\_\_

Parent phone home: (\_\_\_\_\_) \_\_\_\_\_ Parent phone work: (\_\_\_\_\_) \_\_\_\_\_

Parent phone cell: (\_\_\_\_\_) \_\_\_\_\_

Mailing address: \_\_\_\_\_

Primary care physician's name: \_\_\_\_\_ Physician's phone: (\_\_\_\_\_) \_\_\_\_\_

Physician's address: \_\_\_\_\_

#### **INFORMATION NEEDED ABOUT PARTICIPANT (Required):**

**Yes No If yes, please list/explain below. Attach additional sheets if needed.**

Does the participant have any chronic health problem or illness?  
\_\_\_\_\_

Does he or she have any acute illness now?  
\_\_\_\_\_

Has the participant been treated recently for some medical problem?  
\_\_\_\_\_

Is the participant taking any medications for treatment of a medical problem?  
\_\_\_\_\_

Does the participant have any allergies to medication or local anesthetics?  
\_\_\_\_\_

Does he or she have any allergies?  
\_\_\_\_\_

Date of child's last tetanus shot: \_\_\_\_\_

#### **HEALTH INSURANCE INFORMATION (Strongly Encouraged):**

Policy holder's name and relationship to participant: \_\_\_\_\_

Policy holder's address: \_\_\_\_\_

Please attach a photocopy of both sides of your insurance card (preferred) OR complete the information requested here:

Insurance company phone number: (\_\_\_\_\_) \_\_\_\_\_

All policy numbers (please identify): \_\_\_\_\_

If you have HMO insurance, please list emergency treatment authorization phone number: (\_\_\_\_\_) \_\_\_\_\_

Employer's name and address: \_\_\_\_\_

### **SECTION 5- Required**

#### Official Medical Treatment Authorization

I recognize that while attending this program, medical treatment on an emergency basis may be necessary for my child, and I further recognize that volunteers or staff overseeing the program may be unable to contact me for my consent for emergency medical care. I do hereby consent in advance to such emergency care, including hospital care, as may be deemed necessary under the circumstances and to assume the expenses of such care. I also authorize the medical facility to release any and all information required to complete insurance claims and also authorize insurance payment directly to the medical facility.

Parent/Guardian Signature: \_\_\_\_\_ Date: \_\_\_\_\_

Participant must sign if over 18.

MSU is an affirmative-action, equal-opportunity employer. Michigan State University Extension programs and materials are open to all without regard to race, color, national origin, gender, gender identity, religion, age, height, weight, disability, political beliefs, sexual orientation, marital status, family status or veteran status.